

D 膜片-筒夾-漲套精密夾頭系列

IAPHRAGM CHUCK & COLLET CHUCK & EXPANSION CHUCK SERIES



JA回轉缸內藏氣壓膜片夾頭

迴轉缸內藏氣壓膜片夾頭

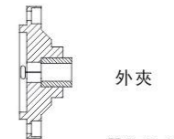
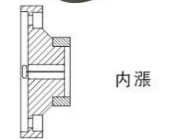
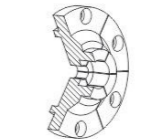
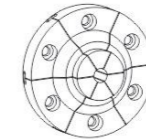
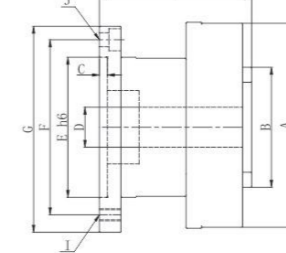
JA PNEUMATIC DIAPHRAGM CHUCK

- ◎ 精密膜片夾頭內藏高性能氣壓迴轉缸
- ◎ 夾頭具中心通孔，可配合自動送料或中心出水工作
- ◎ 夾頭高度密封設計，防塵防水防切削液
- ◎ 無滑動件磨損，超長精度壽命
- ◎ 高轉速工作條件需安裝於機台後校正動平衡
- ◎ 前置式安裝，無須安裝迴轉缸及夾頭拉管
- ◎ 夾持力可由工作氣壓精密微調，適合夾持薄形工件或脆弱工件。單邊厚度1.0mm薄件可以夾持
- ◎ 依據工件設計爪型，可進行外徑夾持或內徑反張

Repeatability is within 0.005mm.
 Air cylinder is integrated: no rotary cylinder or draw tube is required.
 Real front-mounting design allows easy installation.
 Highly-sealed chuck body helps protect cutting chips, dust or coolant fluid from entering.
 Gentle and precise clamping: suitable for fragile parts clamping.
 O.D. chucking / I.D. expanding chuck possible by changing different jaw pads.



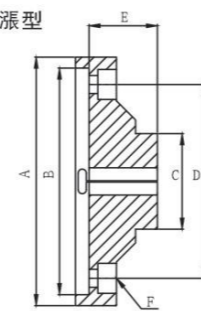
JA產品尺寸性能規格



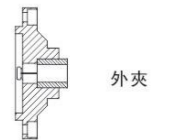
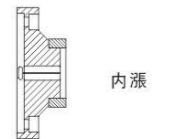
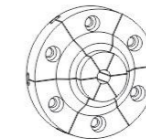
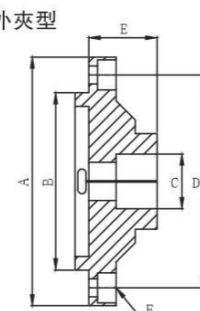
單位/Unit:mm

型號/Model 規格/Spec	夾持行程 Stroke mm	最高轉速 Max. RPM	使用壓力 Max. Pressure Kg/cm ²	淨重 Nw. Kgs	使用夾爪型號 Use gripper model	A	B	C	D	E(H6)	F	G	H	I	J
JA4-60	0.1	4000	2-7	2.8	JD-60	100	60	4	10	70	82	97	76	-	4-M6沉頭孔
JA5-70	0.3	3200	2-7	7	JD-70	147	70	4	15	100	115	137	93	3-M8	3-M8沉頭孔
JA6-100	0.3	2500	2-7	11.5	JD-100	177	100	5	35	130	147	167	107	3-M10	3-M10沉頭孔
JA8-150	0.3	2000	2-7	15	JD-150	220	150	5	65	180	200	220	124	3-M10	3-M10沉頭孔

內漲型



外夾型



內漲

外夾

JD膜片夾爪尺寸表/JD diaphragm jaws spec

型號/Model	JD-60		JD-70		JD-100		JD-150	
	外夾型	內漲型	外夾型	內漲型	外夾型	內漲型	外夾型	內漲型
夾持方式 Clamping method								
A	65	70	75	80	105	110	155	160
B	45	60	50	70	80	100	120	150
C(夾持範圍)	2-60	6-80	3-100	6-140	3-150	6-170	5-200	10-220
D	52	52	60	60	90	90	135	135
E	20	20	22	22	29	29	35	35
F	6-M4沉頭孔	6-M4沉頭孔	6-M5沉頭孔	6-M5沉頭孔	8-M5沉頭孔	8-M5沉頭孔	8-M6沉頭孔	8-M6沉頭孔

* 保留技術更改的權利，恕不另行通知 Subject to technology changes without prior information
 * 非標需求可訂做 Non-standard requirements can be made

JDS超精密膜片固定型夾頭

JDS ULTRA-PRECISION DIAPHRAGM FIXED CHUCK

產品特性

- ◎ 為固定式不可回轉，內置氣缸直接驅動。採用膜片彈性技術，重複精度3μ以下。
- ◎ 永久性精密壽命高密封性設計，防水防塵能力。
- ◎ 輕鬆控制兩端同心度、平行度。多段尺寸可分次加工、降低設備成本。
- ◎ 以單動研磨機、取代CNC多段同時加工。通過三點組合夾持力能精密微調。

產品適用性

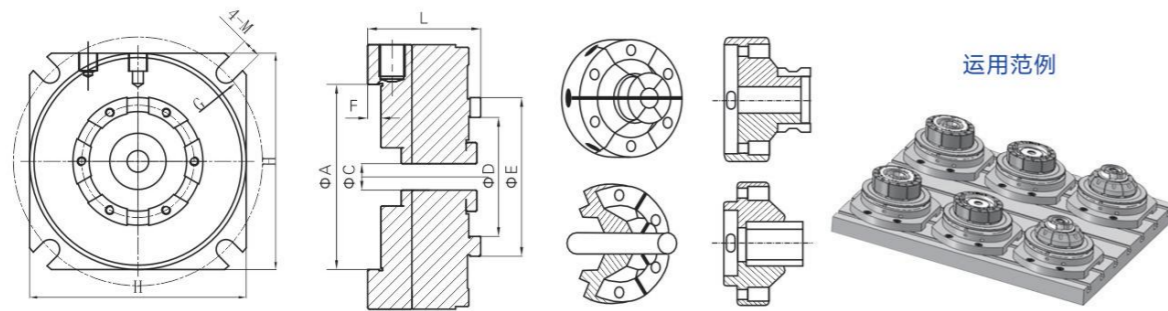
- ◎ 適用CNC 銑鑽床非標夾具等運用，可做聯排多工位夾具使用。
- ◎ 適用於微電子產品、光學零件、醫療零件、輕薄高精度度工件的機加工。
- ◎ 精密元件的檢測。

PRODUCT FEATURES

Fixed, non-rotating, directly driven by the built-in cylinder Employing diaphragm elasticity technology, with a repeatability of below 3μ
Permanent service life in precision; designed with high sealing performance and waterproof and dustproof capabilities
Allowing easy control over the concentricity and parallelism at both ends Allowing separate size processing over multiple sections to reduce equipment costs
Replacing CNC multi-section simultaneous processing with single-action grinding machine
Allowing fine-tuning with three-point clamping force

APPLICATIONS

Suitable for non-standard fixtures for CNC milling and drilling machines; may be used as row-type multi-station fixtures
Suitable for machining of microelectronics products, optical parts, medical parts, thin and high-precision workpieces
Detection of precision components



產品參數 PARAMETERS													
產品型號 Model	A	B	D	E	F	G	H	L	M	驅動方式 Drive Mode	使用壓力 Working Pressure Kg/cm ²	夾持行程 Opening/Closing Stroke mm	使用夾爪 型號 Gripping Jaw Model
JDS4-60	70	10	45	60	5	120	100	42.7	7	空壓	2-7	0.1	JD-60
JDS5-70	100	15	50	70	5	170	150	49.2	9	空壓	2-7	0.3	JD-70
JDS6-100	150	35	80	100	5	195	177	54.3	11	空壓	2-7	0.3	JD-100
JDS8-150	180	65	120	150	5	245	220	59.8	13	空壓	2-7	0.3	JD-150

* 保留技術更改的權利，恕不另行通知 Subject to technology changes without prior information
* 非標需求可訂做 Non-standard requirements can be made

JPD被動型超精密膜片夾頭(後驅動型)

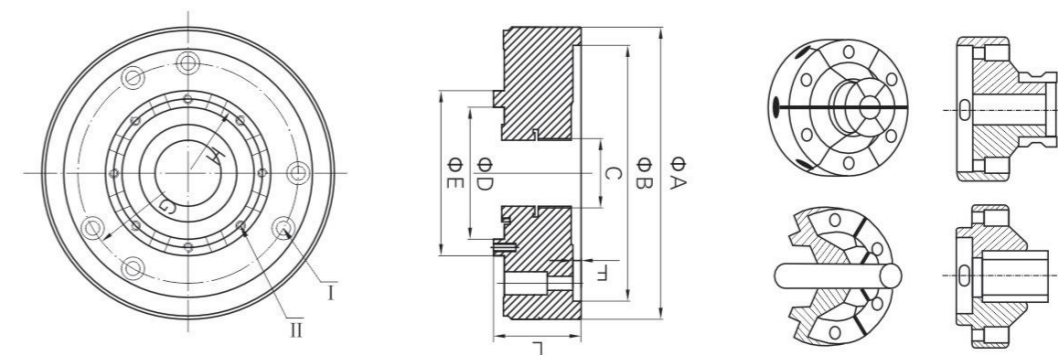
JPD PASSIVE ULTRA-PRECISION DIAPHRAGM CHUCK (REAR DRIVE TYPE)

產品特性

- ◎ 採用膜片彈性技術，重複精度3μ以下，永久性精密壽命。高密封性設計，防水防塵能力。
- ◎ 輕鬆控制兩端同心度、平行度，多段尺寸可分次加工、降低設備成本。
- ◎ 以單動研磨機、取代CNC多段同時加工，需配後置氣油缸拉杆驅動。

產品適用性

- ◎ 微型軸承、馬達、精密套的精密加工，精密元件的檢測。
- ◎ 適用於微電子產品、光學零件、醫療零件、輕薄高精度度工件的車、磨加工。
- ◎ Employing diaphragm elasticity technology, with a repeatability of below 3μ ,Permanent service life in precision. Designed with high sealing performance and waterproof and dustproof capabilities.
- ◎ Allowing easy control over the concentricity and parallelism at both ends. Allowing separate size processing over multiple sections to reduce equipment costs.
- ◎ Replacing CNC multi-section simultaneous processing with single-action grinding machine. Requiring the provision of rear pneumatic/hydraulic cylinder rod drive.
- ◎ Precision machining of micro bearings, motors and precision sleeves
- ◎ Suitable for turning and grinding of microelectronics products, optical parts, medical parts, thin and high-precision workpieces Detection of precision components



產品參數 PARAMETERS														
產品型號 Model	A	B	C	D	E	F	G	L	I	II	H	使用壓力 Working Pressure Kg/cm ²	夾持行程 Opening/Closing Stroke mm	使用夾爪 型號 Gripping Jaw Model
JPD4-60	116	72	M12*1.5	45	60	6	100	41	6-M5沉頭	6-M4牙孔	52	2-7	0.1	JD-60
JPD5-70	147	125	M28*1.5	50	70	5	106.4	57.2	6-M6沉頭	6-M5牙孔	60	2-7	0.3	JD-70
JPD6-100	177	155	M55*2	80	100	5	133.4	53	6-M8沉頭	8-M5牙孔	90	2-7	0.3	JD-100
JPD8-150	220	190	M82*1.5	120	150	5	170	56.8	8-M8沉頭	8-M6牙孔	135	2-7	0.3	JD-150

* 保留技術更改的權利，恕不另行通知 Subject to technology changes without prior information
* 非標需求可訂做 Non-standard requirements can be made

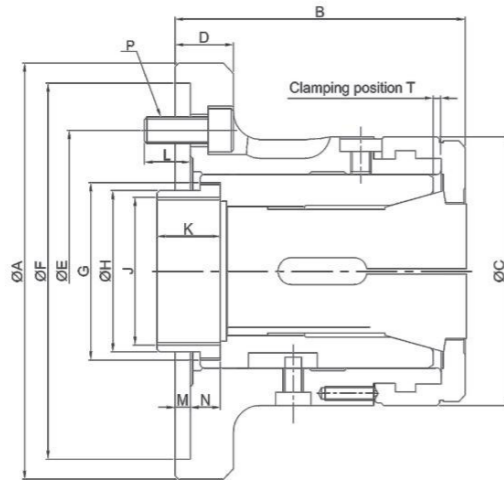
> LL SERIES

筒夾夾頭一

COLLET CHUCK 1



- 1. 筒夾夾頭可快速拆卸止檔蓋，適用於NC/CNC車床加工棒材。
 - 2. 棒材能經由夾頭通孔進行送料作業。
 - 3. 可依工作形狀及尺寸來選擇適合筒夾。
- 1. It is mainly suitable for NC/CNC lathe for machining bar. and the cover is disassemble and the collet can be changed quickly.
 - 2. The bar can be fed in by bar feeder and through the collet chuck hole which can improve the processing efficiency.
 - 3. Customers can choose a suitable spring collet according to the bar shape(round, square, hexagonal) and size.



寸法 Size 型號 Model	適合連接板 Suitable for connecting plates	容許棒材直徑 Allowable bar diameter (mm)	套筒行程 Sleeve stroke (mm)	最大容許推力 Maximum allowable thrust KN(Kgf)	最大夾持力 Max clamping force KN(kgf)	最高轉速 Max r.p.m	重量(Kg) Weight	使用筒夾 Using collets
LL-26	110	26	4.5	17.6(1800)	37.9(3870)	8000	4.3	161E
LL-30	110	30	4.5	19.6(2000)	42.1(4300)	8000	4.2	163E
LL-42	140	42	7	25(2549)	55(5608)	6000	6.2	173E
LL-52	170	52	7	30(3059)	65(6628)	5000	12.5	177E
LL-60	170	60	7	30(3059)	65(6628)	5000	11.5	185E
LL-60	220	60	7	30(3059)	65(6628)	5000	15.5	185E
LL-80	220	80	7	35(3568)	73(7443)	4000	19.5	193E

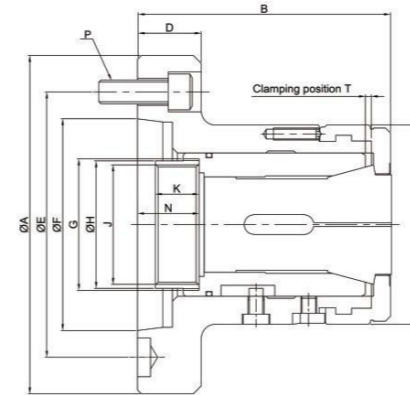
寸法 Size 型號 Model	A	B	C	D	E	F (H6)	G	H	J max.	K	L	M	N	P	T
LL-26	120	100	85	23	82.6	110	M50×P1.5	45	M40×1.5	15	16	4	10.2	3-M10	2.3
LL-30	120	100	85	23	82.6	110	M50×P1.5	45	M40×1.5	15	16	4	10.2	3-M10	2.3
LL-42	155	114	100	23	104.78	140	M66×P1.5	60	M55×P2.0	25	18	6	11.9	3-M10	3.1
LL-52	185	138	130	30	133.35	170	M90×P1.5	66.7	M60×P2.0	30	18	6	17.9	6-M12	3.1
LL-60	185	139	130	30	133.35	170	M90×P1.5	80	M74×P2.0	30	18	6	17.9	6-M12	3.1
LL-60	235	141	130	32	171.45	220	M90×P1.5	80	M74×P2.0	30	20	6	19.9	6-M16	3.1
LL-80	235	167	156	32	171.45	220	M114×P2.0	99	M90×P2.0	27.5	20	6	23.4	6-M16	6.1

* 保留技術更改的權利，恕不另行通知 Subject to technology changes without prior information
* 非標需求可訂做 Non-standard requirements can be made

> LL-A SERIES

筒夾夾頭二

COLLET CHUCK 2



- 1. 筒夾夾頭可快速拆卸止檔蓋，適用於NC/CNC車床加工棒材。
 - 2. 棒材能經由夾頭通孔進行送料作業。
 - 3. 可依工作形狀及尺寸來選擇適合筒夾。
- 1. It is mainly suitable for NC/CNC lathe for machining bar. and the cover is disassemble and the collet can be changed quickly.
 - 2. The bar can be fed in by bar feeder and through the collet chuck hole which can improve the processing efficiency.
 - 3. Customers can choose a suitable spring collet according to the bar shape (round, square, hexagonal) and size.

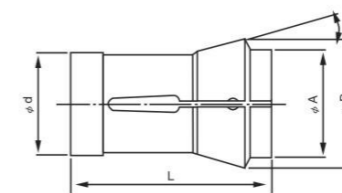
寸法 Size 型號 Model	適合主軸 Suitable for spindle	容許棒材直徑 Allowable bar diameter (mm)	套筒行程 Sleeve stroke (mm)	最大容許推力 Maximum allowable thrust KN(Kgf)	最大夾持力 Max clamping force KN(kgf)	最高轉速 Max r.p.m	重量(Kg) Weight	使用筒夾 Using collets
LL30A4	A2-4	30	5	20(2039)	44(4486)	7000	4.1	163E
LL36A5	A2-5	36	6	22.5(2300)	48.5(4950)	6000	6.3	171E
LL42A5	A2-5	42	7	25(2549)	55(5608)	6000	6.2	173E
LL42A6	A2-6	42	7	25(2549)	55(5608)	6000	8.2	173E
LL52A6	A2-6	52	7	30(3059)	65(6628)	5000	12.2	177E
LL60A6	A2-6	60	7	30(3059)	65(6628)	5000	13	185E
LL65A6	A2-6	67	7	30(3059)	65(6628)	5000	10.6	SAD-65
LL80A8	A2-8	80	7	35(3568)	73(7443)	4000	21	193E

寸法 Size 型號 Model	A	B	C	D	E	F	G	H	J max.	K	N	P	T
LL30A4	112	103.5	85	30	82.55	63.513	M50×P1.5	45	M40×P1.5	15	21.7	3-M10	2.3
LL36A5	135	130	100	27	104.78	82.563	M66×P1.5	60	M55×P2.0	17.5	30.9	4-M10	3.1
LL42A5	135	127	100	27	104.78	82.563	M66×P1.5	60	M55×P2.0	25	30.9	4-M10	3.1
LL42A6	170	127	100	32	133.35	106.375	M66×P1.5	66	M60×P2.0	22	30.9	4-M12	3.1
LL52A6	170	144	130	27	133.35	106.375	M90×P1.5	66.7	M60×P2.0	30	29.9	4-M12	3.1
LL60A6	170	145	130	27	133.35	106.375	M90×P1.5	80	M74×P2.0	30	29.9	4-M12	3.1
LL65A6	170	135	136	27	133.35	106.375	M95×P1.5	81	M75×P2.0	20	29.9	4-M12	3.1
LL80A8	220	170	156	35	171.45	139.719	M114×P2.0	99	M90×P2.0	27.5	32.4	6-M16	6.1

* 保留技術更改的權利，恕不另行通知 Subject to technology changes without prior information
* 非標需求可訂做 Non-standard requirements can be made

彈性筒夾

Collet



規格 / Specification

規格 Model	尺寸 Dim				Max Dia		
	A	B	d	L	○	□	□
161E	39	45	32	75	26	22	18
163E	39	49	35	80	30	27	22
171E	42	55	42	94	37	32	26
173E	50	60	48	94	42	36	28
177E	60	70	58	94	52	45	36
185E	73	84	66	110	60	50	40
SAD-65	79	93	75	100	67	58	47
193E	92	107	90	130	80	69	56

* 保留技術更改的權利，恕不另行通知 Subject to technology changes without prior information
* 非標需求可訂做 Non-standard requirements can be made

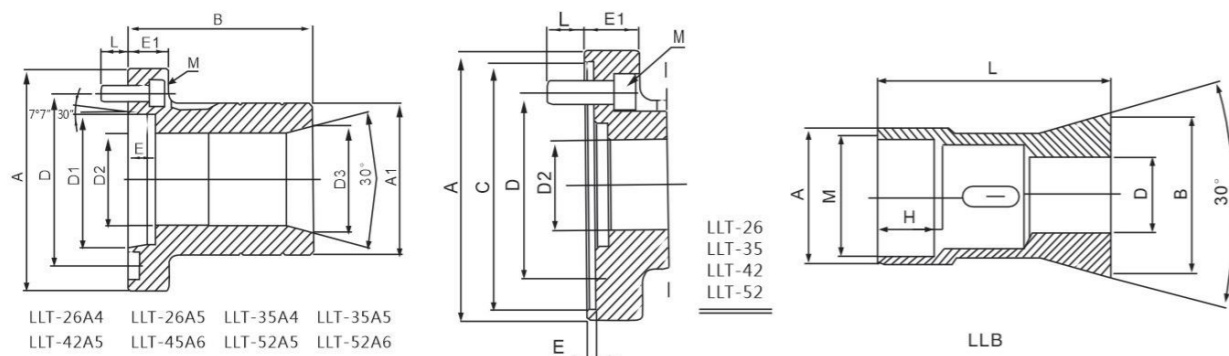
> LLT SERIES

LLT 後拉式筒夾夾頭

LLT PULL BACK COLLET CHUCK



- ◎ 后拉式筒夾夾頭，适用于各种旋削机械及数控车床。
- ◎ 安装方便，与中空夹头相同，可相容互换。
- ◎ 可使棒料从夹头的通孔进行送料作业。
- ◎ 不同尺寸及形状的工作，可选用合适的弹簧夹头。
- ◎ Pull back collet chuck
- ◎ It's applicable for various CNC machines.
- ◎ Easy installation, the installation size is compatible with the related hydraulic chucks.
- ◎ The bar workpiece can be input through the collet chuck hole.
- ◎ The collet is optional for different size and shape workpiece.



型號 Model	A	A1	B	C(H6)	D	D1	D2	D3	E	E1	L	M
LLT-26	120	120	110	110	82.6		40	48	4	25	17	3-M10*25
LLT-35	120	83	110	110	82.6		49	58	4	25	17	3-M10*25
LLT-42	155	90	115	140	104.8		56	65	5	25	17	4-M10*25
LLT-52	155	106	125	140	104.8		65	73	5	25	17	4-M10*25
LLT-26A4	112	73	110		82.6	63.51	40	48	17	25	17	3-M10*30
LLT-26A5	135	73	110		82.6	82.56	40	48	17	25	17	3-M10*30
LLT-35A4	112	83	110		82.6	63.51	49	58	17	25	17	3-M10*30
LLT-35A5	135	83	110		82.6	82.56	49	58	17	25	17	3-M10*30
LLT-42A5	135	90	115		104.8	82.56	56	65	17	25	17	4-M10*30
LLT-42A6	165	90	115		133.4	106.38	56	65	17	30	17	4-M12*30
LLT-52A5	135	106	125		104.8	82.56	65	73	17	25	17	4-M10*30
LLT-52A6	165	106	125		133.4	106.38	65	73	17	30	17	4-M12*30

型號 Model	A (g6)	B	D max 圓棒 Round	D max 六角料 Hexagonal	D max 方料 Square	H	L	M
LLB-26	40	49	26	22	18	27	95	M33*1.5
LLB-35	49	59	35	32	26	27	95	M42*1.5
LLB-42	56	66	42	42	29	27	100	M50*2
LLB-52	65	74	52	52	36	27	100	M55*2

* 保留技術更改的權利，恕不另行通知 Subject to technology changes without prior information
 * 非標需求可訂做 Non-standard requirements can be made

前推式筒夾夾頭-美規5C/16C

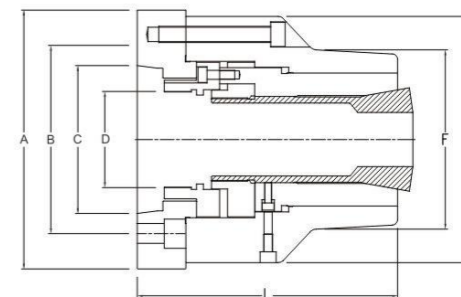
5C/16C CPD DEAD-LENGTH COLLET CHUCK FOR 5C/16C COLLET

- ◎ 搭配美規5C/16C筒夾工作
- ◎ 5C筒夾最大徑26mm
- ◎ 16C筒夾最大夾徑40mm
- ◎ 滑套前推夾緊，工件軸向不位移
- ◎ Adops 5C/16C collets.
- ◎ 5C Collet: max. capacity 26mm.
- ◎ 16C Collet: max. capacity 40mm.



CPD筒夾夾頭出廠時隨附一祇半加工的拉管轉接螺帽，客戶可以依照機床主軸現有的拉管尺寸加工拉管螺帽
 NTH offers a blank drawnut when shipping the chuck. Customers could thread the drawnut according to the drawtube of the machine.

CPD筒夾夾頭尺寸與規格



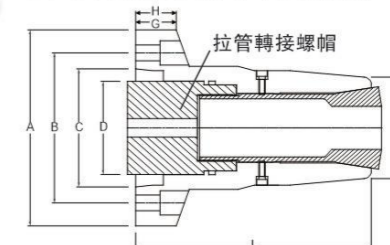
型號/Model	CPD-5CA5	CPD-5CA6	CPD-16CA5	CPD-16CA6
主軸鼻端 Spindle nose	A2-5	A2-6	A2-5	A2-6
A	138 (5.43")	158 (6.22")	138 (5.43")	158 (6.22")
B (P.C.D.)	104.8 (4.13")	133.4 (5.25")	104.8 (4.13")	133.4 (5.25")
C	82.6 (3.25")	106.4 (4.19")	82.6 (3.25")	106.4 (4.19")
D 轉接拉管 Draw tube thread	M73 x P1.5	M73 x P1.5	M91 x P1.5	M91 x P1.5
E	100 (3.94")	100 (3.94")	138 (5.43")	138 (5.43")
F	78 (3.07")	78 (3.07")	90 (3.54")	90 (3.54")
L	123 (4.84")	125 (4.92")	145 (5.71")	148 (5.83")
安裝螺絲 Screw	6H-M10	6H-M12	6H-M10	6H-M12
工作筒夾 Collet	5C筒夾 (最大夾26mm)	5C筒夾 (最大夾26mm)	16C筒夾 (最大夾40mm)	16C筒夾 (最大夾40mm)
拉管允許推力 Max. Pull force	1800kgf (3900lbf)	1800kgf (3900lbf)	2300kgf (5060lbf)	2300kgf (5060lbf)
最高轉速 Max RPM	6000	6000	5000	5000
產品淨重 N. W	8.0kgs (17.6lbs)	9.0kgs (19.8lbs)	10.0kgs (22lbs)	12.0kgs (26.4lbs)

後拉式筒夾夾頭-美規5C/16C

CPB筒夾夾頭尺寸與規格

5C/16C CPB PULL BACK COLLET CHUCK

- ◎ 搭配美規5C/16C筒夾工作
- ◎ 5C筒夾最大徑26mm
- ◎ 16C筒夾最大夾徑40mm
- ◎ 滑套後拉夾緊，夾持精度高
- ◎ Adops 5C/16C collets.
- ◎ 5C Collet: max. capacity 26mm.
- ◎ 16C Collet: max. capacity 40mm.
- ◎ Pull back design. High accuracy.



CPB筒夾夾頭出廠時隨附一祇半加工的拉管轉接螺帽，客戶可以依照機床主軸現有的拉管尺寸加工拉管螺帽

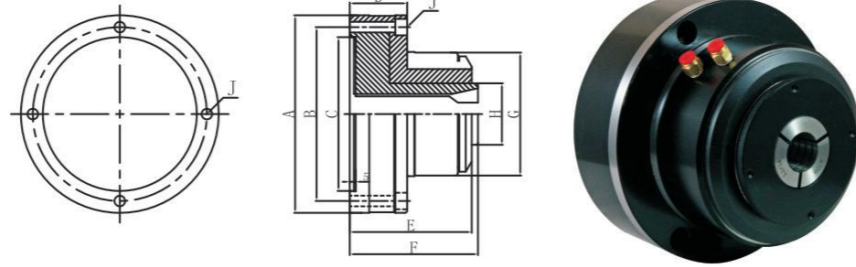
型號/Model	CPB-5CA5	CPB-5CA6	CPB-16CA5	CPB-16CA6
主軸鼻端 Spindle nose	A2-5	A2-6	A2-5	A2-6
A	137 (5.39")	166 (6.54")	137 (5.39")	166 (6.54")
B (P.C.D.)	104.8 (4.13")	133.4 (5.25")	104.8 (4.13")	133.4 (5.25")
C	82.6 (3.25")	106.4 (4.19")	82.6 (3.25")	106.4 (4.19")
D 轉接拉管 Draw tube thread	最大/Max. M58	最大/Max. M65	最大/Max. M58	最大/Max. M65
F	60 (2.36")	60 (2.36")	80 (3.15")	80 (3.15")
L	122 (4.80")	122 (4.80")	145 (5.71")	145 (5.71")
G	24.547	26.641	24.547	26.641
H	31	35	31	35
安裝螺絲 Screw	3H-M10	3H-M12	6H-M10	6H-M12
工作筒夾 Collet	5C筒夾(Collet)	5C筒夾(Collet)	16C筒夾(Collet)	16C筒夾(Collet)
拉管允許拉力	1800kgf (3900lbf)	1800kgf (3900lbf)	2300kgf (5060lbf)	2300kgf (5060lbf)
最高轉速 Max RPM	6000	6000	5000	5000
產品淨重 N. W	5.0kgs (11.0lbs)	7.5kgs (16.5lbs)	5.5kgs (12.1lbs)	10.0kgs (22.0lbs)

* 保留技術更改的權利，恕不另行通知 Subject to technology changes without prior information
 * 非標需求可訂做 Non-standard requirements can be made

JAB 回轉型空壓高速夾頭

JAB BUILT-IN AIR CYLINDER COLLET CHUCK

- ◎ 此夾頭可使用內漲或外夾兩種配置
- ◎ 夾頭本體為熱處理鋼一體成型
- ◎ 軸承無負荷，轉速高，壽命長，溫度低
- ◎ 雙向作動力，強制開啓筒夾、決不卡料
- ◎ 壓力中斷時，夾頭呈夾持狀態
- ◎ 可由前端安裝，減小連接板厚度
- ◎ 筒夾不後縮，可正常控制工作長度
- ◎ 本體回轉精度小於0.01mm



適用於：NC車床、普車、研磨機、分度盤、第4軸、第5軸。

Applicable to CNC/lathe/grinder/rotary table/the 4th axis/the 5th axis.

The collet has two types of inside expansion and outside clamping.

No loading on bear, So high rotary speed, low temperature, long working service time.

Safty designation, when the air pressure is interrupted, the chuck still be clamping status.

It could be front mounting, So the adapter can be compacted.

The collet clamping type is pushing forward, So the workpiece length can be controlled.

The collet chuck's body accuracy is within 0.01mm.

單位/Unit:mm

型號/Model 規格/Spec	活塞行程 Piston Stroke mm	最大扭力 Max. Torque N·m	空壓壓力 Air Pressure Kg/cm ²	最高轉速 Max. RPM	適配筒夾 Collet type	最大夾持外徑 Max. Clamping Dia.	重量 Weight Kgs
JAB-15	4	3	3--8	4000	YB-15	15	3.2
JAB-25	4	3	3--8	4000	YB-25	25	9.5
JAB-40	4	4.5	3--8	4000	CC16	40	13.5
JAB-60	4	7.8	3--8	3000	CC20	60	20.35
JAB-80	4	35	3--8	1500	193E	80	32

型號/Model 規格/Spec	A	B	C(H6)	D	E	F	G	H	J
JAB-15	100	84	70	40	82	85	71	30	4*M6
JAB-25	167	147	130	48	103	108	104	52	4*M8
JAB-40	187	168	150	50	118	122	133	72	4*M8
JAB-60	220	203	170	55	125	130	168	100	4*M10
JAB-80	247	226	200	69	144.25	153	200	145	6*M10

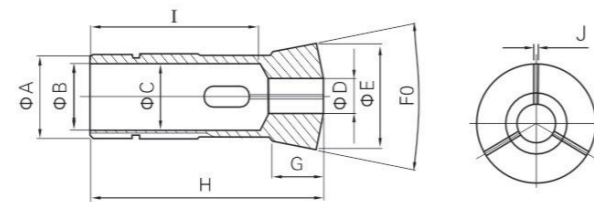
夾持扭力是以6kgf/cm² 夾持20mm圓棒測得 The clamping torque is come by the testing of using 6kgf/cm² to clamp the dia. 20mm round bar

保留技術更改的權利，恕不另行通知 Subject to technology changes without prior information.

非標需求可訂做 Non-standard requirements can be made

彈性筒夾

COMMONLY SPRING COLLETS



產品型號 MODEL	A	B	C	D(Max)	E	F	G	H	I	J
YB-15	M18.2*1.5	13.5	19	15	26.3	30°	16	76	62	3-1
YB-25	31.3*20牙	25.5	32	25	39.5	20°	23	104	75	3-1.2
CC16	M47.5*1.75	40.5	48	40	58.6	20°	20	112	65	4-1.5
CC20	M72*2	62	73	60	85	20°	30	125	80	3-2

* 保留技術更改的權利，恕不另行通知 Subject to technology changes without prior information
* 非標需求可訂做 Non-standard requirements can be made

JAH 精密高速空壓夾頭

JAH PRECISION HIGH-SPEED PNEUMATIC CHUCK



- ◎ 熱處理鋼一體成型之結構體，軸承無負荷，轉速高、壽命長、溫升低。
- ◎ 雙向作動力，強制開啓筒夾、決不卡料。氣源中斷時，夾頭呈自鎖狀態。
- ◎ 直接法蘭連接于主軸，安裝方便快捷，通過三點組合氣閥可連接機床系統控制。
- ◎ 本體精度0.005mm以內，可調節夾持精度在0.005以內。

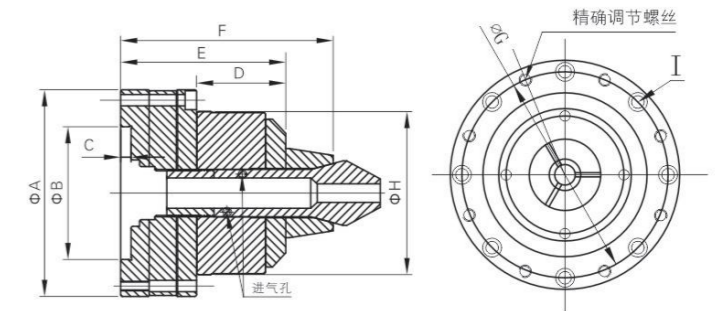
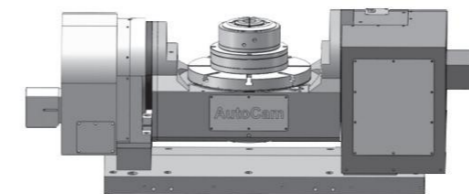
Having an integral structure made of heat-treated steel, no load at the bearing, high speed, long service life, low temperature rise.

With two-way acting force, allowing forcibly opening the collet, no material jamming; the chuck being self-locked in cases of air source failure.

Direct connection between flange and spindle, easy and quick installation, connecting the machine tool system control through the three-point air valve.

Allowing quick change of the collet to facilitate product replacement without backward movement of collet while the working length can be controlled normally.

With a body accuracy within 0.005mm and adjustable clamping accuracy within 0.005mm.



型式 Model	A	B	C	D	E	F	G	H	I	最高轉速 Maximum Speed rpm/min	活塞行程 Piston Stroke mm
JAH-20	109	70	5.5	47	87	112	98	86	8-M5沉頭	3000	3
JAH-25	109	70	5.5	47	87	112	98	86	8-M5沉頭	3000	3
JAH-32	140	100	5.5	53	93	107	126	98	6-M6沉頭	3000	3

型式 Model	夾持行程 Clamping Stroke mm	最大扭力 Maximum Torque N.m	驅動方式 Drive Mode	夾持範圍 Clamping Range kg/cm ²	使用筒夾 Collet	重量 Weight kg	使用壓力 Working Pressure kg/cm ²	夾緊方式 Clamping Method
JAH-20	0.2	12	空壓 Pneumatic	Φ3-14	W20	5.5	3-8	后拉 Pull
JAH-25	0.2	15	空壓 Pneumatic	Φ5-19	W25	6.5	3-8	后拉 Pull
JAH-32	0.2	20	空壓 Pneumatic	Φ5-25	W31.75	8.5	3-8	后拉 Pull

* 保留技術更改的權利，恕不另行通知 Subject to technology changes without prior information
* 非標需求可訂做 Non-standard requirements can be made

油氣壓固定式夾頭-前推型

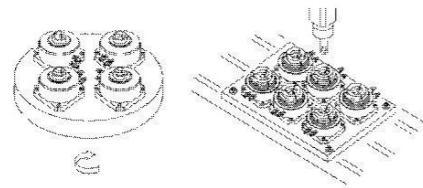
JAS/JHS AIR/HYDRAULIC POWER STATIONARY CHUCK--PUSH FORWARD TYPE

產品簡介

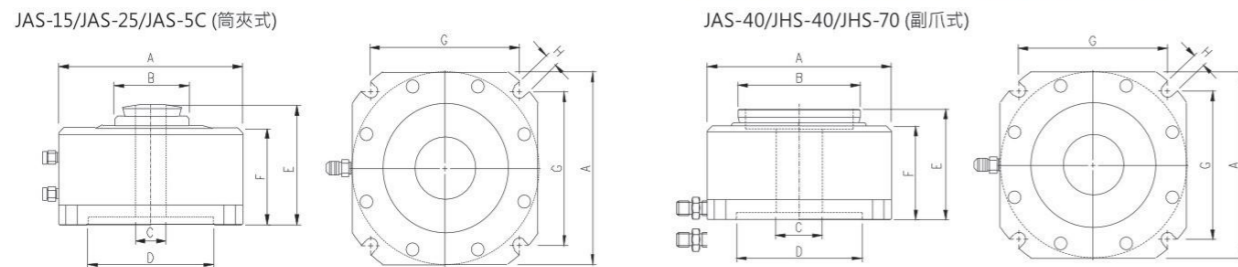
油氣壓固定型夾頭具備精簡的體積，讓您的工作平台能同時容納更多固定式夾頭，以提升工作效率。產品的高品質符合您對穩定性、高精度、防水防塵的要求，降低維修及人工成本，適合安裝於各式鑽銑工作機台。

- ◎ 鋼製夾頭本體
- ◎ 高精度·高剛性·產品壽命長
- ◎ 防塵·防屑·防切削液
- ◎ 夾頭強制放料設計·不卡料
- ◎ 體積小·重量輕·工作速度快

Cost effective stationary collet chuck.
Dead length design: no axial movement.
High accuracy. High rigidity. Long product life.
High resistant to cutting chips, fluid or dust.
Chuck force-opening design ensures no workpieces jamming.



JAS/JHS產品尺寸及性能規格



型號 /Model	JAS-15	JAS-25	JAS-5C	JAS-40	JHS-40	JHS-70
A	118 (4.65")	144 (5.67")	144 (5.67")	168 (6.61")	144 (5.67")	190 (7.48")
B	40 (1.57")	55 (2.17")	55 (2.17")	95 (3.74")	95 (3.74")	136 (5.35")
C	14 (0.55")	26 (1.02")	26 (1.02")	38 (1.50")	38 (1.50")	68 (2.68")
D	90 (3.54")	100 (3.94")	100 (3.94")	100 (3.94")	100 (3.94")	155 (6.10")
E	77 (3.03")	108 (4.25")	93 (3.66")	97 (3.82")	94 (3.70")	95 (3.73")
F	64 (2.52")	74 (2.91")	74 (2.91")	77 (3.03")	73 (2.87")	74 (2.91")
G	97 (3.82")	118 (4.65")	118 (4.65")	136.5 (5.37")	118 (4.65")	153.5 (6.04")
H	9 (0.35")	9 (0.35")	9 (0.35")	11 (0.43")	9 (0.35")	11 (0.43")
工作筒夾/副爪 Collet/Jaw Model	YB-15型筒夾 YB-15 Type Collet	YB-25型筒夾 YB-25 Type Collet	5C型筒夾 5C Type Collet	C-40型副爪 C-40 Type Jaw	C-40型副爪 C-40 Type Jaw	C-70型副爪 C-70 Type Jaw
氣壓/油壓驅動 Power source	氣壓/油壓 Air/Hydraulic	氣壓/油壓 Air/Hydraulic	氣壓/油壓 Air/Hydraulic	氣壓 Air	油壓 Hydraulic	油壓 Hydraulic
工作壓力 Working pressure	3-15kg/cm ² (43-214psi)	3-15kg/cm ² (43-214psi)	3-15kg/cm ² (43-214psi)	3-8kg/cm ² (43-114psi)	3-20kg/cm ² (43-286psi)	3-20kg/cm ² (43-286psi)
最大夾持徑(通孔) Max clamping dia. (Through hole)	14mm (0.56")	26mm(1.02")	26mm(1.02")	38mm(1.50")	38mm(1.50")	68mm(2.68")
最大夾持徑(不通孔) Max clamping dia. (Non thru)	18mm (0.71")	28mm (1.10")	28mm (1.10")	50mm (1.97")	50mm (1.97")	90mm (3.54")
活塞面積 Piston Area	79cm ² (12.2in ²)	112cm ² (17.4in ²)	112cm ² (17.4in ²)	240cm ² (37.2in ²)	86cm ² (13.3in ²)	110cm ² (17.1in ²)
夾持力 Clamping force	2850kgf@7kg/cm ² (6260lbf@100psi)	3890kgf@7kg/cm ² (8550lbf@100psi)	3890kgf@7kg/cm ² (8550lbf@100psi)	5090kgf@7kg/cm ² (11210lbf@100psi)	5250kgf@20kg/cm ² (11550lbf@286psi)	6780kgf@20kg/cm ² (14920lbf@286psi)
產品淨重 N. W	5.0kgs (11.0lbs)	9.0kgs (19.8lbs)	9.0kgs (19.8lbs)	12.5kgs (27.5lbs)	8.5kgs (18.7lbs)	13.5kgs (29.7lbs)

* 保留技術更改的權利，恕不另行通知 Subject to technology changes without prior information
* 非標需求可訂做 Non-standard requirements can be made

精密氣壓立式筒夾夾頭(後拉式)

JASP PRECISION AIR STATIONARY COLLET CHUCK--PULL BACK TYPE

產品簡介

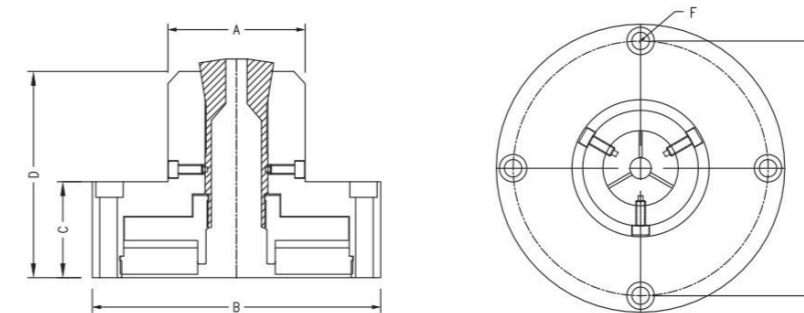
油氣壓固定型夾頭具備精簡的體積，讓您的工作平台能同時容納更多固定式夾頭，以提升工作效率。產品的高品質符合您對穩定性、高精度、防水防塵的要求，降低維修及人工成本，適合安裝於各式鑽銑工作機台。

- ◎ 鋼製夾頭本體
- ◎ 高精度·高剛性·產品壽命長
- ◎ 精密立式氣壓筒夾夾頭
- ◎ 後拉夾緊·精度高
- ◎ 搭配美規5C筒夾/16C筒夾
- ◎ 夾頭強制放料設計·不卡料
- ◎ 防塵·防屑·防切削液

Steel chuck body.
Pull back to close: high precision.
Adopting 5C / 16C collets.
High resistant to chips, fluid and dust.
High accuracy. High rigidity.



固定式夾頭尺寸及性能規格



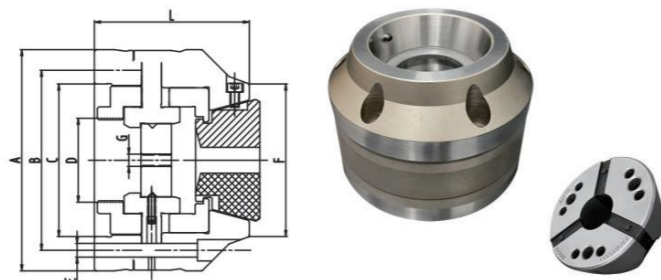
型號 /Model	JASP-5C	JASP-16C
A	70 (2.76")	90 (3.54")
B	147 (5.79")	178 (7.00")
C	49 (1.93")	49 (1.93")
D	105 (4.13")	126 (4.96")
E	130 (5.12")	158 (6.22")
F (安裝螺絲孔 Mounting Bolts)	4H-M8	4H-M8
工作筒夾 Collet	美規5C型筒夾 ANSI 5C collet	美規16C型筒夾 ANSI 16C collet
工作壓力 Power source	3-8kg/cm ² (43-114psi)	3-8kg/cm ² (43-114psi)
最大夾徑 Max Clamping Dia	26mm (1.02")	40mm (1.57")
活塞面積 Piston Area	88cm ² (13.7in ²)	131cm ² (20.3in ²)
夾持力 Clamping Force	3175kgf@7kg/cm ² (6985lbf@100psi)	4725kgf@7kg/cm ² (10395lbf@100psi)
產品淨重 N. W	6.5kgs (14.3lbs)	12.5kgs (27.5lbs)

* 保留技術更改的權利，恕不另行通知 Subject to technology changes without prior information
* 非標需求可訂做 Non-standard requirements can be made

精密後拉筒夾夾頭

POWER COLLET CHUCK

- ◎ 快速更換筒夾設計，30秒以內快速更換工作尺寸
- ◎ 中心止檔設計，工件軸向位置穩定
- ◎ 油壓迴轉缸驅動工作，高夾持力
- ◎ 筒夾開口度0.5mm以上，適合機械手自動上料作業
- ◎ 夾頭本體合金鋼硬化精密研磨制成，精度壽命長
- ◎ 適合安裝於數控車床，研磨機，專業機等工作
- ◎ Fast collet change design: less than 30 seconds.
- ◎ Removable End-Stop to ensure axial accuracy.
- ◎ Large clamping range: 0.5mm opening.
- ◎ Adopting SZM Spannstar vulcanized Clamping Heads.
- ◎ (compatible with Hainbuch, Ortieb, and other brands)



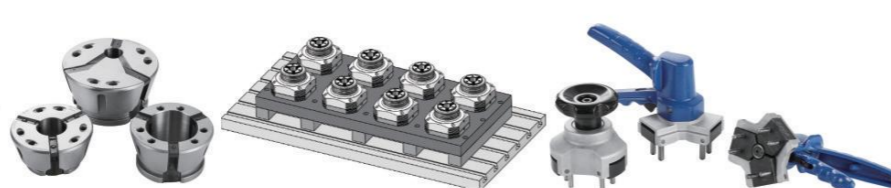
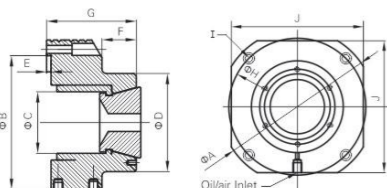
寸法 Size 型號 Model	容許棒材直徑 Allowable bar diameter (mm)	套筒行程 Sleeve stroke (mm)	拉桿軸向行程 Draw tube stroke (mm)	最大容許拉力 Maximum allowable thrust KN(Kgf)	最大夾持力 Max clamping force KN(Kgf)	最高轉速 Max r.p.m	重量(Kg) Weight	使用筒夾 Using collets
JPCA-42	42	1	5	31.5(3200)	70.5 (7200)	6500	9.5	SK42
JPCA-52	52	1	5	31.5(3200)	70.5 (7200)	6500	9.5	SK52
JPCA-65	65	1	5	39(4000)	93.5 (9500)	5500	14	SK65
JPCA-80	80	1	5	39(4000)	93.5 (9500)	5500	15	SK80
JPCA-100	100	1	5	39(4000)	93.5 (9500)	5500	-	SK100

寸法 Size 型號 Model	A	B	C	D	E	F	G	L
JPCA-42	145	118	100	M55*2.0	6-M8	100	M8	101.5
JPCA-52	145	118	110	M55*2.0	6-M8	100	M8	101.5
JPCA-65	175	147	130	M75*2.0	6-M8	123	M8	110
JPCA-80	187	160	140	M95*2.0	6-M10	137	M8	114
JPCA-100	217	190	170	M125*2.0	6-M10	175	M8	131.5

JHL橡膠筒夾固定型夾頭

JHL RUBBER COLLET FIXED CHUCK

- ◎ 注膠柔性筒夾，平行夾持，夾持面更大抓緊力更強。
- ◎ 長久壽命，高防水防塵能力。輕鬆控制兩端同心度、平行度。
- ◎ 多段尺寸可分次加工、降低設備成本。
- ◎ 以單動研磨機、取代CNC多段同時加工，需配後置氣油缸拉桿驅動。
- ◎ 通用CNC銑鑽床非標夾具等運用，可做聯排多工位夾具使用。
- ◎ 適用於精密工件的機加工。
- ◎ With a long service life, and good waterproof and dustproof capability. Allowing easy control over the concentricity and parallelism at both ends.
- ◎ Allowing separate size processing over multiple sections to reduce equipment costs.
- ◎ Replacing CNC multi-section simultaneous processing with single-action grinding machine.
- ◎ Requiring the provision of rear pneumatic/hydraulic cylinder rod drive.
- ◎ Suitable for non-standard fixtures for CNC milling and drilling machines; may be used as row-type multi-station fixtures.
- ◎ Suitable for machining of precision workpieces.



產品型號 Model	A	B	C	D	E	F	G	H	I	J	驅動方式 Drive Mode	使用壓力 Working Pressure Kg/cm ²	夾持行程 Opening/Closing Stroke mm	使用夾爪型號 Gripping Jaw Model
JHL-42	185	150	45	110	5	38.5	100.5	164	4-M8	158	空/油壓 Air/oil pressure	20	0.5	SK42
JHL-52	185	150	55	110	5	38.5	100.5	164	4-M8	158	空/油壓 Air/oil pressure	20	0.5	SK52
JHL-65	185	150	65	130	5	38.5	100.5	164	4-M8	158	空/油壓 Air/oil pressure	18	0.5	SK65

* 保留技術更改的權利，恕不另行通知 Subject to technology changes without prior information
* 非標需求可訂做 Non-standard requirements can be made

JAP207-42BZI 回轉缸內藏氣壓筒夾夾頭

安裝於車床、磨床或四軸/五軸旋轉台

JAP207-42BZI AIR COLLET CHUCK FOR RUBBER FLEX COLLETS

- ◎ 採用德國SZM原廠SpannStar精密筒夾
- ◎ 精密筒夾夾頭內藏高速氣壓迴轉缸
- ◎ 節省安裝迴轉缸、油箱、幫浦等設備成本
- ◎ 夾頭本體經精密研磨，精度超高
- ◎ 雙活塞設計，夾持力強大
- ◎ 先進軸承設計，高轉速低溫升
- ◎ 夾頭本體半密封設計，高度防水防塵
(註：切削水不可直接沖向夾頭本體)



Adopts Hainbuch style clamping heads.
Built-in rotary air cylinder.
Precision pull-back collet chuck: 0.010mm repeatability.
Chuck is with through hole for bar parts.
Double piston: large gripping force.
High resistance to coolant fluid and chips penetration.

JAP207-42BZI

JAP207-42BZI迴轉缸內藏氣壓筒夾夾頭提供使用者安裝筒夾夾頭系統時極大的方便性。使用者只需要準備連接盤與壓縮空氣源，即可以快速的完成筒夾夾頭系統的安裝工作，並即刻展開加工作業。JAP207-42BZI精密氣壓筒夾夾頭採用德國原裝SpannStar精密筒夾，筒夾能透過一組筒夾更換板手快速交換。JAP207-42BZI氣壓筒夾內藏高速氣壓迴轉缸，不需額外安裝夾頭拉管與驅動裝置，適合應用於數控車床或加工專用機的工件夾持系統、傳統機床改裝夾持自動化、或是安裝於數控加工中心的四軸/五軸實現夾持自動化等應用。

CHP206-SS42 回轉缸內藏油壓筒夾夾頭

分度盤、旋轉台等四軸/五軸自動夾持

CHP206-SS42 HYDRAULIC COLLET CHUCK FOR ROTARY TABLES / INDEXING TABLES

- ◎ 採用德國SZM原廠SpannStar精密筒夾
- ◎ 精密筒夾夾頭內藏油壓迴轉缸
- ◎ 專為加工中心四軸/五軸夾持自動化設計
- ◎ 夾頭本體經精密研磨，精度超高
- ◎ 前置安裝於旋轉盤前方，旋轉盤擺動不干涉
- ◎ 液壓驅動夾持，夾持力大



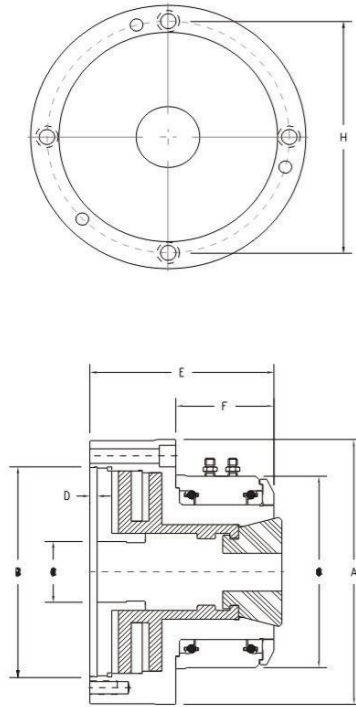
Adopts Hainbuch style clamping heads.
Built-in rotary hydraulic cylinder.
Precision pull-back collet chuck: 0.010mm repeatability.
Special for rotary tables / indexing tables.
Real front-mounting design allows easy installation.
Hydraulic actuated: large gripping force.

CHP206-SS42

CHP206-SS42油壓筒夾夾頭是專為數控加工中心四軸或五軸旋轉盤夾持自動化所設計的專用夾具。CHP206-SS42內藏液壓迴轉驅動機構，夾頭前置安裝於旋轉盤前方，無需在旋轉盤後方安裝迴轉缸與拉管。因此旋轉盤迴轉擺動時，機構後方無迴轉機構干涉旋轉盤的運動路徑。CHP206-SS42搭配德國原裝SpannStar精密筒夾工作，筒夾能以一組快換板手在30秒以內更換完成，提高工具機的工作效率。

* 保留技術更改的權利，恕不另行通知 Subject to technology changes without prior information
* 非標需求可訂做 Non-standard requirements can be made

產品尺寸與性能規格

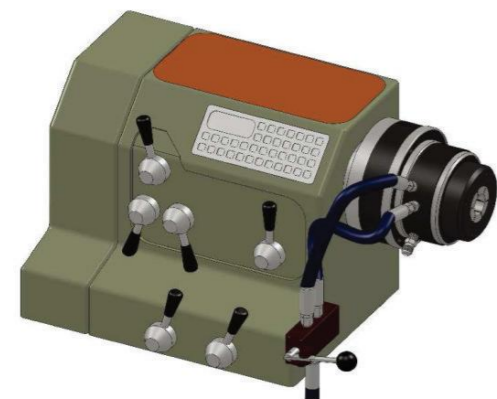


型號 / Model	JAP207-42BZI	CHP206-SS42
氣壓/油壓 Air/Hydraulic	氣壓 Air	油壓 Hydraulic
A	197 (7.75")	166 (6.54")
B	155 (6.10")	130 (5.12")
C	42 (1.65")	42 (1.65")
D	4.5 (0.18")	4.5 (0.18")
E	146 (5.75")	100 (3.94")
F	69 (2.72")	52 (2.05")
G	146 (5.75")	135 (5.31")
H(P.C.D.)	172 (6.77")	147 (5.79")
安裝螺絲孔 Mounting Bolts	3H-M10 (前鎖 Front) + 3H-M10 (後鎖 Rear)	4H-M10 (前鎖 Front)
工作筒夾 Collet	SZM SS42 筒夾 Collet	SZM SS42 筒夾 Collet
最高轉速 Max RPM	2500	100
工作壓力 Working Pressure	3-7kg/cm ² (40-100psi)	10-30kg/cm ² (143-500psi)
最大夾持徑 Max. Clamping Dia	42mm (1.65")	42mm (1.65")
活塞面積 Piston Area	256cm ² (40.0in ²)	66cm ² (10.2in ²)
夾持力 Clamping Force	5572kgf @7kg/cm ² (12258lbf @100psi)	5669kgf @30kg/cm ² (12472lbf @428psi)
產品淨重 N. W	20kgs (44lbs)	10kgs (22lbs)

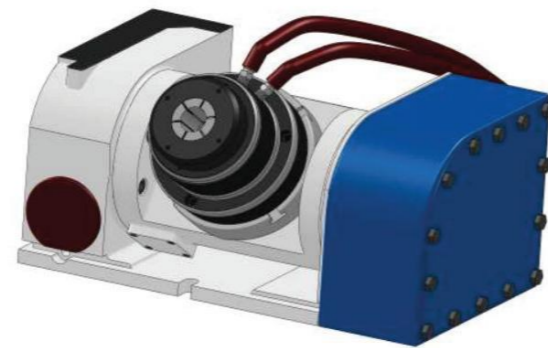
回轉缸內藏式夾頭

ROTARY CYLINDER BUILT-IN TYPE COLLET CHUCK

迴轉缸內藏夾頭系列產品整合精密夾頭與迴轉驅動機構，能降低客戶安裝動力夾具系統的時間與成本。產品線完整：有大夾持力的油壓驅動夾頭與低設備需求的氣壓驅動夾頭，有應用於普通機床改裝的低成本夾頭至應用於高精度夾持的氣壓膜片夾頭。除了列於型錄的產品之外，我們每年為客戶訂製開發有數款的新型迴轉缸內藏夾頭，請與我們聯繫，取得最新的產品訊息。



應用例：安裝於車床/磨床/專用機主軸

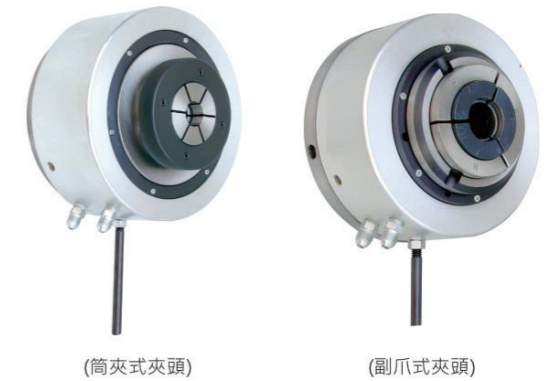


應用例：安裝於四軸/五軸旋轉盤

油氣壓快速回轉夾頭

AIR/HYDRAULIC POWER ROTARY POWER CHUCK

- ◎ 快速夾頭內藏油壓/氣壓迴轉缸，免額外安裝迴轉缸
- ◎ 安裝簡易，快速建置工作夾持系統
- ◎ 氣壓型夾頭缸體加大，提升夾持力
- ◎ 筒夾/副爪快速更換設計，高工作彈性
- ◎ 夾頭具中心通孔設計，配合自動送料系統工作
- ◎ 夾持/放料週期短，生產速度快
- ◎ 可不停機上下料，產能高
- ◎ 適合傳統車床改裝自動化或半自動化
- ◎ 適合組裝各式專用加工機械
- ◎ 切削液不可直接沖向夾頭
- ◎ JA7-44/JH7-44採用增力2.0倍設計，提供增大夾持力
- ◎ JA7-44/JH7-44可以選購內張套件進行內張夾持作業 (內張套件參考P.13)



Self-Contained Power Chuck. No need for an extra rotary actuator. Aluminum alloy chuck body, light-weighted, good heat dispersion. Allows non-stop operation when loading/unloading parts. Widely applied to convert manual lathes into powered ones. Refer to the following figure.

產品簡介

快速精密迴轉夾頭系列產品即是高性能、高品質、安裝方便、使用容易的代名詞。

快速精密迴轉夾頭系列內藏油氣壓迴轉缸，使用者可以在極短的時間內完成工件夾持系統的設置，快速地展開各式加工作業。此外，快速精密迴轉夾頭的快速更換筒夾/副爪設計，能幫助客戶更彈性的面對各式少量多樣的加工作業。因此無論是自動化加工、半自動化加工、傳統機床改裝自動化、專用機組裝等各式應用，快速精密迴轉夾頭皆是客戶的指名首選。

快速精密迴轉夾頭是業界公認的領導品牌。我們堅持品質至上，選用進口軸承組與零件組，全線產品自金屬材料、加工、組裝、產品測試至產品包裝等作業，一律由本廠與長期合作的協力夥伴一貫完成，提供客戶高等級的品質承諾。

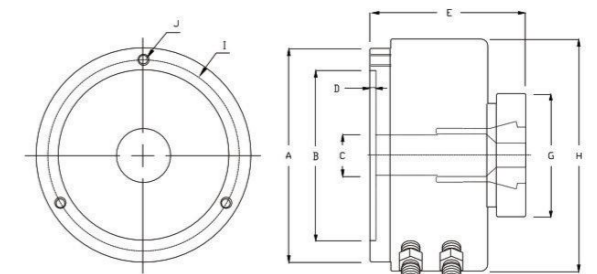
It used to be complex for users to convert a manual lathe into one with power workholding device since setting up a hydraulic system is quite troublesome.

NTH Rotary Power Chuck is specially designed to help users to set up a power chuck in a low cost and easy way. With its built-in rotary actuator, the Rotary Power Chuck can be installed and start working in less than 20 minutes.

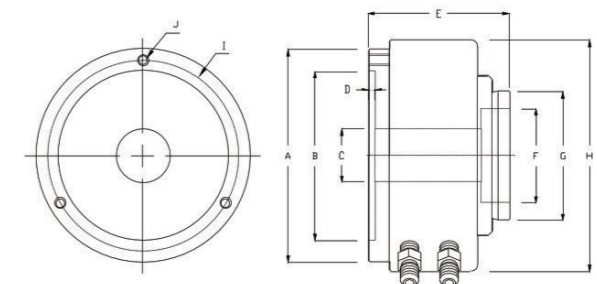
Rotary Power Chuck comes with both air chuck and hydraulic chuck models that range from small sizes to large ones, giving users more options to choose from. Rotary Power Chuck now is widely applied to convert manual lathes to semi-auto ones with power workholding system, or is applied to build special purpose machines.

* 保留技術更改的權利，恕不另行通知 Subject to technology changes without prior information
* 非標需求可訂做 Non-standard requirements can be made

筒夾式快速迴轉夾頭



副爪式快速迴轉夾頭



筒夾式快速迴轉夾頭 *內張外夾兩用-詳見次頁

Collet Style Power Chuck

型號/Model	JA7-44	JH7-44
A	192 (7.56")	192 (7.56")
B	155 (6.10")	155 (6.10")
C	44 (1.73")	44 (1.73")
D	5 (0.20")	5 (0.20")
E	135 (5.31")	135 (5.31")
F	-	-
G	107 (4.21")	107 (4.21")
H	212 (8.35")	212 (8.35")
I (P.C.D)	172 (6.77")	172 (6.77")
J	3H-M10 (後鎖 Rear)	3H-M10 (後鎖 Rear)
工作筒夾/副爪 Working collet/Jaw	C-44筒夾 Collet C-44I內張套件 Expanding parts	C-44筒夾 Collet C-44I內張套件 Expanding parts
氣壓/油壓驅動 Power source	氣壓 Air	油壓 Hydraulic
工作壓力 Working pressure	2-20kg/cm ² (28-286psi)	2-20kg/cm ² (28-286psi)
最高轉速 Max RPM	1600	1600
最大夾徑 通孔/不通孔 Max Clamping dia. Thru/no thru	44mm (1.73")	44mm (1.73")
缸體活塞面積 Piston Area	117cm ² (18in ²)	117cm ² (18in ²)
夾持力 Clamping force	5400kgf@16kg/cm ² (12020lbf@229psi)	10800kgf@16kg/cm ² (24040lbf@229psi)
產品淨重 N. W	17kgs (37.4lbs)	17kgs (37.4lbs)

氣壓式副爪快速回轉夾頭

Jaw Style Power Chuck-Air

型號/Model	JA5-25	JA7-40	JA7-70
A	135 (5.31")	192 (7.56")	192 (7.56")
B	100 (3.94")	155 (6.10")	155 (6.10")
C	25 (0.98")	45 (1.77")	68 (2.68")
D	4.0 (0.16")	4.5 (0.18")	5.0 (0.20")
E	102 (4.02")	126 (4.96")	141 (5.55")
F	45 (1.77")	65 (2.56")	105 (4.13")
G	68 (2.68")	94 (3.70")	136 (5.35")
H	170 (6.69")	212 (8.35")	265 (10.43")
I (P.C.D)	115 (4.53")	172 (6.77")	172 (6.77")
J	3H-M8 (後鎖 Rear)	3H-M10 (後鎖 Rear)	3H-M10 (後鎖 Rear)
工作筒夾/副爪 Working collet/Jaw	C-25型副爪 C-25 Type Jaw	C-40型副爪 C-40 Type Jaw	C-70型副爪 C-70 Type Jaw
氣壓/油壓驅動 Power source	氣壓 Air	氣壓 Air	氣壓 Air
工作壓力 Working pressure	2-9kg/cm ² (28-130psi)	2-9kg/cm ² (28-130psi)	2-9kg/cm ² (28-130psi)
最高轉速 Max RPM	1800	1600	1400
最大夾徑 通孔/不通孔 Max Clamping dia. Thru/no thru	25mm/32mm (0.98"/1.26")	45mm/50mm (1.77"/1.97")	68mm/90mm (2.68"/3.54")
缸體活塞面積 Piston Area	115cm ² (17.8in ²)	182cm ² (28.2in ²)	329cm ² (50.8in ²)
夾持力 Clamping force	2254kgf@7kg/cm ² (4958lbf@100psi)	3567kgf@7kg/cm ² (7847lbf@100psi)	6429kgf@7kg/cm ² (14143lbf@100psi)
產品淨重 N. W	7.5kgs (16.5lbs)	15.0kgs (33.0lbs)	22.5kgs (49.5lbs)

油壓式副爪快速回轉夾頭 Jaw Style Power Chuck-Hydraulic

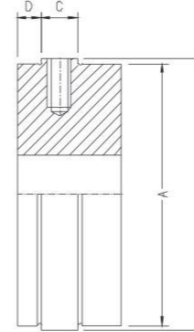
型號 /Model	JH5-25	JH7-40	JH7-70	JH9-90	JH9-120
A	135 (5.31")	192 (7.56")	192 (7.56")	230 (9.06")	229 (9.02")
B	100 (3.94")	155 (6.10")	155 (6.10")	190 (7.48")	190 (7.48")
C	25 (0.98")	45 (1.77")	68 (2.68")	88 (3.52")	118 (4.65")
D	4.0 (0.16")	4.5 (0.18")	5.0 (0.20")	5.5 (0.22")	5.5 (0.22")
E	102 (4.02")	126 (4.96")	141 (5.55")	150 (5.91")	157 (6.18")
F	45 (1.77")	65 (2.56")	105 (4.13")	105 (4.13")	140 (5.51")
G	68 (2.68")	94 (3.70")	136 (5.35")	136 (5.35")	168 (6.61")
H	138 (5.43")	190 (7.48")	211 (8.31")	232 (9.13")	275 (10.83")
I (P.C.D)	115 (4.53")	172 (6.77")	172 (6.77")	210 (8.27")	210 (8.27")
J	3H-M8 (後鎖) Rear	3H-M10 (後鎖) Rear	3H-M10 (後鎖) Rear	3H-M12 (後鎖) Rear	3H-M12 (後鎖) Rear
工作副爪 Working Jaw	C-25型副爪 C-25TypeJaw	C-40型副爪 C-40TypeJaw	C-70型副爪 C-70TypeJaw	C-90型副爪 C-90TypeJaw	C-120型副爪 C-120TypeJaw
氣壓/油壓驅動 Power source	油壓 Hydraulic	油壓 Hydraulic	油壓 Hydraulic	油壓 Hydraulic	油壓 Hydraulic
工作壓力 Air Pressure	10-25kg/cm ² (143-357psi)	10-20kg/cm ² (143-286psi)	10-20kg/cm ² (143-286psi)	10-15kg/cm ² (143-214psi)	10-15kg/cm ² (143-214psi)
最高轉速 Max RPM	1800	1600	1400	1100	900
最大夾徑 通孔/不通孔 Max Clamping dia. Thru/no thru	25mm/32mm (0.98"/1.26")	45mm/50mm (1.77"/1.97")	68mm/90mm (2.68"/3.54")	88mm/88mm (3.52"/3.52")	118mm/118mm (4.65"/4.65")
缸體活塞面積 Piston Area	56cm ² (8.68in ²)	85cm ² (13.1in ²)	117cm ² (18.1in ²)	133cm ² (20.7in ²)	183cm ² (28.4in ²)
夾持力 Clamping force	2508kgf@16kg/cm ² (5519lbf@228psi)	4032kgf@16kg/cm ² (8870lbf@228psi)	5197kgf@16kg/cm ² (11433lbf@228psi)	5913kgf@16kg/cm ² (13009lbf@228psi)	6148kgf@12kg/cm ² (13528lbf@171psi)
產品淨重 N. W	6.0kgs (13.2lbs)	13.0kgs (28.6lbs)	18.0kgs (39.6lbs)	24.0kgs (52.8lbs)	30.0kgs (66.0lbs)

* 保留技術更改的權利，恕不另行通知 Subject to technology changes without prior information
* 非標準需求可訂做 Non-standard requirements can be made

快速回轉夾頭/固定型夾頭專用副爪

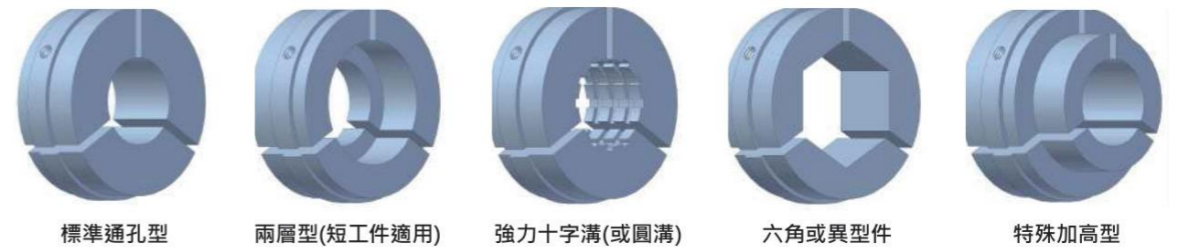
SPECIAL JAWS FOR HIGH SPEED ROTARY COLLET CHUCK/STATIONARY COLLET CHUCK

專用副爪尺寸與適用產品



型號/Model	A	B	C	D	安裝螺絲	適用夾頭型號 Application collet chuck
C-25	45mm (1.77")	47.5mm (1.87")	7mm (0.28")	5.0mm (0.20")	M5x10	JA5-25 / JH5-25
C-40	65mm (2.56")	67.5mm (2.66")	9mm (0.35")	6.0mm (0.24")	M6x12	JA7-40 / JH7-40 JAS-40 / JHS-40 / CAF-40
C-70	105mm (4.13")	107.5mm (4.23")	9mm (0.35")	6.0mm (0.24")	M6x12	JA7-70 / JH7-70 / JH9-90 JHS-70 / CAF-70
C-120	140mm (5.51")	143.5mm (5.65")	9mm (0.35")	6.0mm (0.24")	M6x14	JH9-120

根據工件外型與夾持需求所設計的專用夾爪



內張與外夾兩用的44型快速回轉夾頭

44 TYPE EXPANDING AND CLAMPING DOUBLE FUNCTION ROTARY COLLET CHUCK

(JA7-44/JH7-44)



將筒夾式迴轉夾頭快速的轉換為內張夾頭

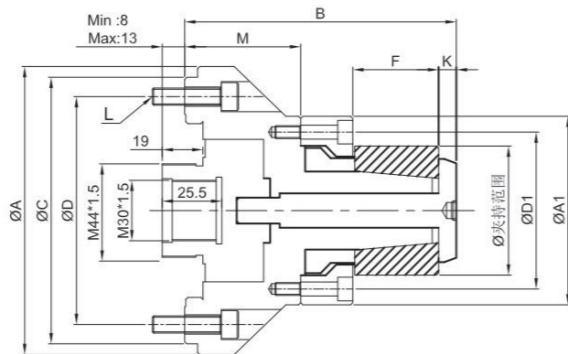
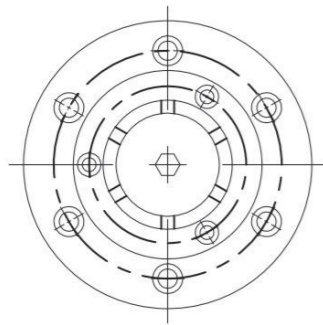
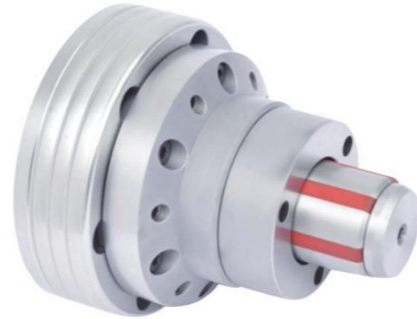
筒夾式快速迴轉夾頭(JA7-44 / JH7-44)除了可以安裝C-44型筒夾應用於外夾作業外，亦可以透過安裝一組內張套件，包含一只推桿座與彈性內徑夾，可以在非常短的時間內快速地將筒夾式快速迴轉夾頭轉換為快速迴轉內張夾頭。快速迴轉夾頭的彈性內徑夾(C-44I)是根據客戶的加工作所設計訂製的，我們的製作速度快，可以在訂單後一週內交貨，幫助您快速地展開您的內張夾持加工作業。

* 保留技術更改的權利，恕不另行通知 Subject to technology changes without prior information
* 非標準需求可訂做 Non-standard requirements can be made

NPT211 後拉式橡膠內漲夾頭

PULL BACK EXPANSION RUBBER COLLET CHUCK

- ◎ NPT采用分片式筒夾，筒夾的錐面完全貼合與夾頭本體，因此形成一個組合式的實體夾具，使得加工剛性，機械穩定性，夾持精度都得到很大的提高。
- ◎ 適用與CNC車，專用機，或其它的旋削機械，主要用途為車削，磨，銑等加工。
- ◎ 高同心度和重複精度0.01mm以內。
- ◎ 可增加安裝氣密檢測裝置。
- ◎ 適合通孔夾持。
- ◎ NPT collet chuck adopts a rubber flex collet, the conical surface of the collet is completely fitted with the chuck body, thus forming a combined solid fixture, which greatly improves the processing rigidity, mechanical stability, and clamping accuracy.
- ◎ It's suitable for CNC lathes, special machines, or other turning machines, mainly used for turning, grinding, milling and other processing.
- ◎ Its concentricity and repeatability is within 0.01mm
- ◎ Airtight detection device can be installed
- ◎ It's suitable for through hole clamping



型號 Model	夾爪行程 mm	夾持範圍 mm	筒夾閉合量 mm	容許油壓缸推力 (kgf)	最高轉速 r.p.m	最大夾持力 kgf	重量 kg	使用筒夾
NPT211-100	5.5	22-28	-0.3~+0.4	816	7000	5712	5	HK-1000
NPT211-110	5.5	26-38	-0.3~+0.5	1020	6000	7140	6	HK-1100
NPT211-120	5.5	36-54	-0.4~+0.6	1836	5500	12852	7	HK-1200
NPT211-130	5.5	50-80	-0.4~+0.6	2244	5500	15708	8	HK-1300
NPT211-140	6	69-100	-0.4~+0.6	3060	5500	21420	10	HK-1400
NPT211-150	6	100-130	-0.5~+0.6	4080	5000	28560	30	HK-1500

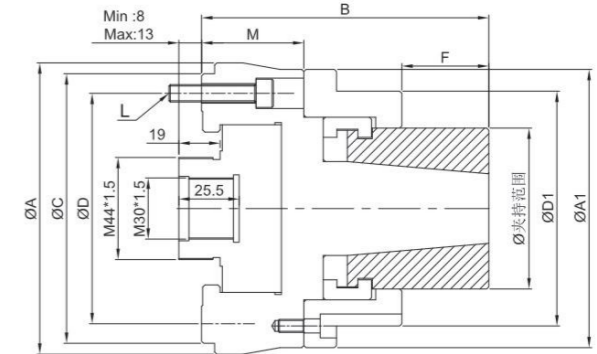
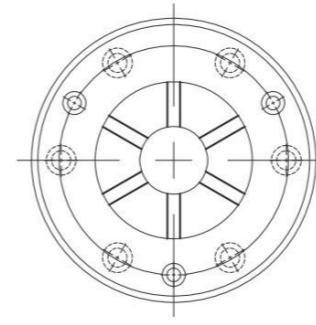
型號 Model	A	A1	B	C (H6)	D	D1	E	F	M	L	K
NPT211-100	139	75	107	131	116	50(3-M6)	7	22	60	6-M8*35	10
NPT211-110	139	75	121	131	116	60(3-M6)	7	26	59	6-M8*35	10
NPT211-120	139	80	134	131	116	65(3-M5)	7	43	55	6-M8*35	11
NPT211-130	139	100	152	131	116	80(3-M6)	7	49	62	6-M8*35	-
NPT211-140	139	115	164	131	116	91(3-M6)	7	59	60	6-M8*35	15
NPT211-150	230	130	210	219	192	117(3-M8)	14	76	75	6-M10*50	-

* 保留技術更改的權利，恕不另行通知 Subject to technology changes without prior information
 * 非標準需求可訂做 Non-standard requirements can be made

NPT212後拉式橡膠內漲夾頭

PULL BACK EXPANSION RUBBER COLLET CHUCK

- ◎ NPT采用分片式筒夾，筒夾的錐面完全貼合與夾頭本體，因此形成一個組合式的實體夾具，使得加工剛性，機械穩定性，夾持精度都得到很大的提高。
- ◎ 適用與CNC車，專用機，或其它的旋削機械，主要用途為車削，磨，銑等加工。
- ◎ 高同心度和重複精度0.01mm以內。
- ◎ 可增加安裝氣密檢測裝置。
- ◎ 適合盲孔夾持。
- ◎ NPT collet chuck adopts a rubber flex collet, the conical surface of the collet is completely fitted with the chuck body, thus forming a combined solid fixture, which greatly improves the processing rigidity, mechanical stability, and clamping accuracy.
- ◎ It's suitable for CNC lathes, special machines, or other turning machines, mainly used for turning, grinding, milling and other processing.
- ◎ Its concentricity and repeatability is within 0.01mm
- ◎ Airtight detection device can be installed
- ◎ It's suitable for blind hole clamping



型號 Model	夾爪行程 mm	夾持範圍 mm	筒夾閉合量 mm	容許油壓缸推力 (kgf)	最高轉速 r.p.m	最大夾持力 kgf	重量 kg	使用筒夾
NPT-212-XX	5	13-18	-0.25~+0.25	816	7000	5712	5	HJ-XX
NPT-212-X	5	16-21	-0.25~+0.25	816	7000	5712	5	HJ-XX
NPT212-200	5.5	20-28	-0.3~+0.4	816	7000	5712	5	HJ-2000
NPT212-210	5.5	26-38	-0.3~+0.5	1020	6000	7140	6	HJ-2100
NPT212-220	5.5	36-54	-0.4~+0.6	1836	5500	12852	7	HJ-2200
NPT212-230	5.5	50-80	-0.4~+0.6	2244	5500	15708	8	HJ-2300
NPT212-240	6	69-100	-0.4~+0.6	3060	5500	21420	10	HJ-2400
NPT212-250	6	100-130	-0.4~+0.6	4080	5500	28560	30	HJ-2500

型號 Model	A	A1	B	C (H6)	D	D1	E	F	M	L
NPT-212-XX	139	114	95	131	116	53(3-M5)	7	14	45	6-M8*30
NPT-212-X	139	114	97	131	116	57(3-M5)	7	14	49.5	6-M8*30
NPT212-200	139	86	112	131	116	70(3-M6)	7	21	51.5	6-M8*40
NPT212-210	139	90	117	131	116	750(3-M6)	7	25	51.5	6-M8*30
NPT212-220	139	105	133	131	116	90(3-M5)	7	40	51.5	6-M8*40
NPT212-230	139	120	140	131	116	104(3-M6)	7	44.5	53	6-M8*40
NPT212-240	139	140	150	131	116	124(3-M6)	7	52.5	53	6-M8*40
NPT212-250	230	195	175	219	192	176(3-M8)	14	65	65	6-M10*40

* 保留技術更改的權利，恕不另行通知 Subject to technology changes without prior information
 * 非標準需求可訂做 Non-standard requirements can be made